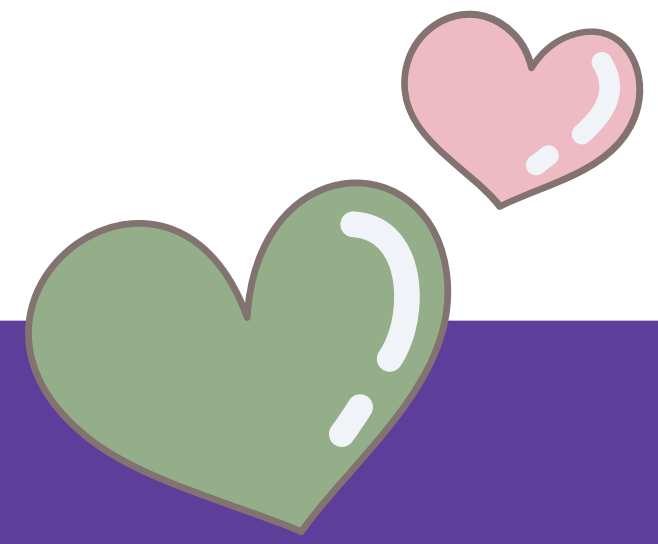


Interpreter Profile

Thai-Korea Interpreter

Ms.Sumin



Education

B.A Engineering Thammasat University
Thailand 2007–2011

High School Sarasas Ektra , Thailand 2004–2007



Experience

- Samsung Electronics Co., Ltd. (2009) – Bangkok

Position: Thai–Korean Interpreter for audit team

Duties: Consecutive interpreting during audit, meetings, interviews, and on-site inspection; document translation.

SUMIN Korean Interpreter

- Samsung SDS Co., Ltd. (2010) – Chonburi

Position: Thai–Korean Interpreter for training

Duties: Consecutive interpreting in training sessions, logistics meetings, and document translation.

- Samsung Electro-mechanics Co., Ltd. (2013)
– Nakhon Ratchasima

Position: Thai–Korean Interpreter

Duties: Consecutive interpreting for meetings, training, presentations, and internal communications.

- Cheil Thailand Ltd. (2015) – Bangkok

Position: Interpreter Duties: Consecutive interpreting for audit teams meetings, and business discussions.

Events / Exhibitions / Business Matching

- M-net Bangkok Concert 2012
– Interpreter for camera team
- Asia Game Business Matching 2013
– Software industry
- K-AV Concert Bangkok 2013
– Stage director
- Thailand Franchise & Business Opportunities 2013
– Korean franchise
- Thaitex / World of Food Asia (2014, 2015)
– Korean food companies
- Asia Technology Business Matching 2014
– Downon-tech
- Beyond Beauty ASEAN 2014
– Medibeautey
- ASEAN–Korea Thailand Board of Investment 2015
– Business meetings
- IVI Asia 2015 – Business conference
- DITP Thai Trade Center 2015
– MOU contract support
- Daegu Prosecutor’s Office 2019
– Interpreter

